

SCHULTE®

BX-62 • BX-74 • BX-84

Snow Blowers

Mid Sized 3pt Hitch, Skid Steer & Loader Mount Snow Blowers

540RPM Twin Stage Snow Blowers



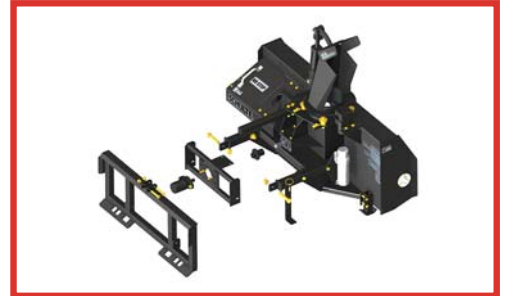
- 1** High Efficient 22" 4 paddle fan with open center & cupped blade design.
- 2** Gear driven rotator with high molecular plastic bearing surface ensures smooth rotation in the coldest conditions.
- 3** The oil bath gearbox input & fan shaft is a 1 3/8" diameter splined design for a positive connection to the power shaft & fan.
- 4** Hydraulic deflector available for control at the spout.

G O N U M B E R O N E . . . G O S C H U L T E !

Skid Steer Mount Kit

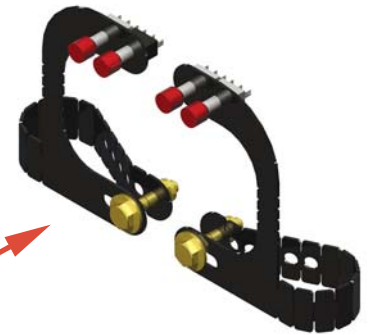


Designed to work on most popular skid steer tractors or with our new HK-350 Hydro Pak with front end loader with skid steer attach type buckets.

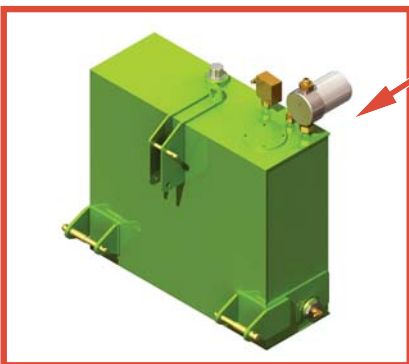


The optional hydraulic valve block (part #B620-420) allows the user to control the rotation and deflection of the chute with one hydraulic circuit on the tractor or skid steer.

Handle bar mounted switches for skid steer use.



HK-350 3pt hydro pack for Front End Loader mount application



A 3pt mounted hydraulic reservoir runs off the 540 PTO of the tractor. Two pumps and motors are available to choose from depending on the HP of your tractor.

Works with tractors with quick attach skid steer type mount buckets.

Dealer must provide proper length of hoses.

Reservoir Kit provides exceptional traction.



Features

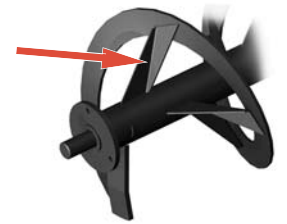


The heart of these Schulte Snow Blowers is the 4 paddle open center, cupped blade design fan that concentrates snow to the center & back of the fan which results in improved performance. A 1 3/8" splined hub welded into the fan ensures maximum strength over competitive keyed designs.



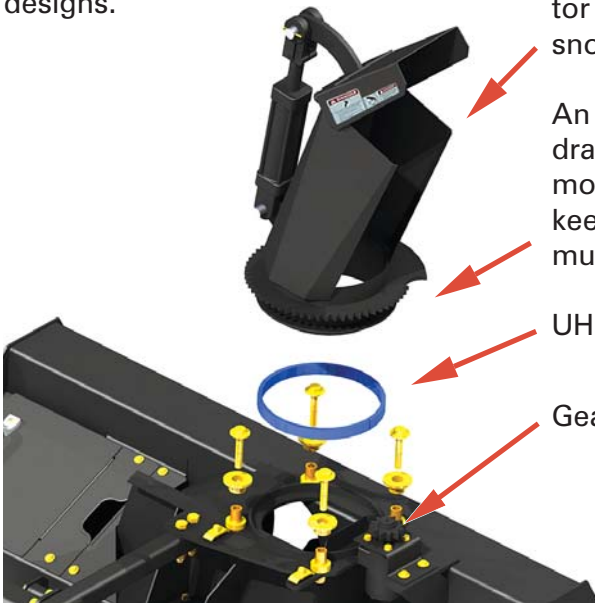
An oil bath gearbox provides positive performance. A 1 3/8" splined & heat treated fan shaft ensures maximum strength & wear resistance.

Formed 90 degree struts.



A single open auger is more efficient than competitive double auger designs and allows maximum power to be directed to the fan where it should be!

An open auger design feeds the fan properly. Formed 90 struts help paddle snow to the fan and add substantial strength. Having the auger set out in front of the blower housing cuts into hard pack snow & reduces stress on the tractor drive system by reducing clutching.

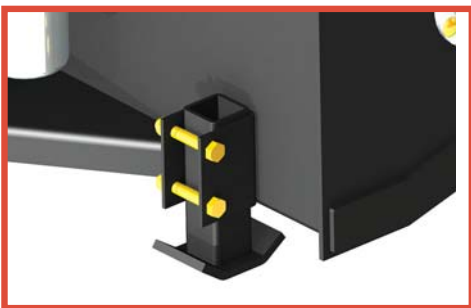


The optional hydraulic deflector allows the user to place snow where they want it.

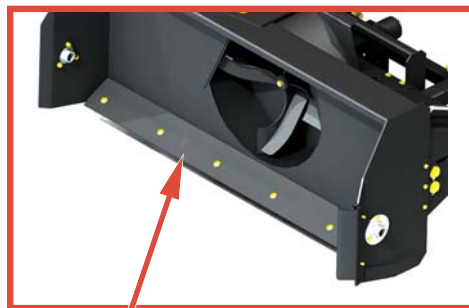
An optional gear driven hydraulic chute rotator with high molecular plastic bearing area keeps freeze ups to a minimum.

UHMW bearing area.

Gear driven rotator motor.



Adjustable & replaceable skid shoes keep cutting height where you want it to prevent scalping.



A bolt in replaceable cutting blade is standard and gives many years of trouble free cutting performance.

The auger is protected by a 1/4" x 2" grade 2 shear pin.

On 3pt models the tractor & gearbox are protected by a size 8mm X 45mm grade 5 shear pin on the power shaft.

Features (continued)



A positive gear connection on the rotator, whether using a manual or hydraulic rotator, ensures easy turning in cold weather



Optional manual chute rotator

BX Series Specifications

SPECIFICATIONS

	BX-62	BX-74	BX-84
Cutting Width	62" (1575mm)	74" (1880mm)	84" (2134mm)
Cutting Height	26" (660mm)	26" (660mm)	26" (660mm)
Overall Height	55" (1397mm)	55" (1397mm)	55" (1397mm)
Auger Diameter	14" (356mm)	14" (356mm)	14" (356mm)
Fan Diameter	22" (559mm)	22" (559mm)	22" (559mm)
Fan Shaft Diameter	1 3/8" (35mm)	1 3/8" (35mm)	1 3/8" (35mm)
Auger Chain Drive	#50	#50	#50
Weight	560lbs (254kg)	620lbs (281kg)	635lbs (288kg)
Adjustable Chute Deflector	Standard	Standard	Standard
Replaceable Cutting Blade	Standard	Standard	Standard
Replaceable Skid Shoe	Standard	Standard	Standard
Skid Steer Hydraulic requirements			
Minimum	13 GPM	15 GPM	18 GPM
Recommended	16 GPM - or higher	18 GPM - or higher	24 GPM - or higher
Recommended HP 3pt Models	20 - 35HP	30 - 45HP	40 - 55HP
Capacity - Dry snow / Wet snow	132tons/hr / 415tons/hr	132tons/hr / 415tons/hr	132tons/hr / 415tons/hr

OPTIONS

3pt or skid steer mounts, tractor shaft, various size motors to match skid steer flows, pumps & motors for loader kit, reservoir kit, hydraulic block (primarily used on skid steer application with skid steers with only one valve bank), manual chute rotator & deflector, loader hydraulic chute rotator & deflector (customer needs to source hoses) & various skid steer mounting plates. B601-325 hydraulic components needed to run the snow blower fan when using a manual rotator on a skid steer unit.



Schulte Industries Ltd.,
 P.O. Box 70, Englefeld, Saskatchewan, Canada S0K 1N0
 Tel: (306) 287-3715 Fax: (306) 287-3355
 E-Mail: info@schulte.ca
 Visit our Web site at: www.schulte.ca

Schulte is a registered trademark of Alamo Group Inc.
 Schulte Industries Ltd. reserves the right to change the design, specification of its products without notice. Illustrations may include optional equipment and accessories, and may not include all standard equipment.



Sold By:

PRINTED IN CANADA PREPARED by NELSON GRAPHIC DESIGN 200905