

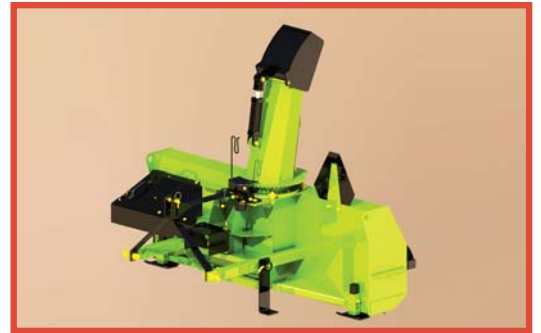
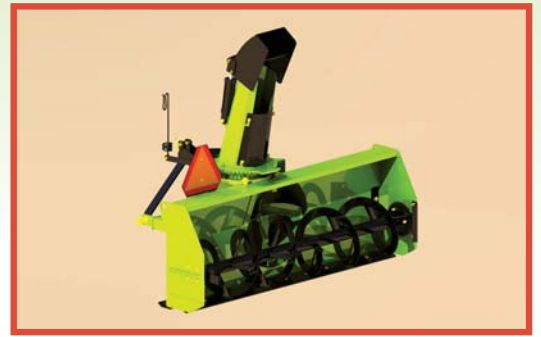
SCHULTE®

RDX-960 • SDX-960 • SDX-840 AVALANCHE Snow Blowers



- 1** 96" wide cut and efficient twin stage design are ideally suited to 85-140 HP tractors.
- 2** The RDX-960 rotating drum allows snow to be ejected out left or right side or through center chute.
- 3** In heavy wet snow, blowing capacity of the RDX-960 is greatly increased due to the fact the snow can be discharged directly off the fan paddles versus all the way up through the center chute.
- 4** Highly efficient 30" - four paddle fan with an open center and cupped blades results in improved throwing distance on all models.
- 5** A heavily reinforced auger feeds snow to the fan and ensures that chunks of ice and hard packed snow are broken up before being discharged.
- 6** A replaceable cutting blade and replaceable adjustable skid shoes are standard on all models.
- 7** A heavy duty gearbox with 1 5/8" splined shafts provides positive power delivery to the fan.
- 8** UHMW bearing and bronze bushings in the rollers allow for reduced freeze-up on chute.
- 9** Shear bolt protection for the fan and cross auger.
- 10** Full one year warranty on materials and workmanship.

G O N U M B E R O N E . . . G O S C H U L T E !

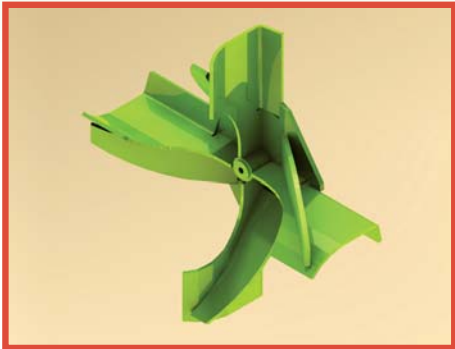


- 1** 84" wide cut and efficient twin stage design are ideally suited to 55-95 HP tractors
- 2** High efficiency 26" four paddle fan with an open center and cupped blades result in improved throwing distance.
- 3** Heavily reinforced auger feeds snow to the fan and ensures that chunks of ice and hard packed snow are broken up before being discharged.
- 4** Replaceable blade and replaceable adjustable skid shoes add to the SDX-840's value.
- 5** Deflector design reduces blowback and hinge is maintenance free.
- 6** UHMW bearing and bronze bushings in the rollers allow for reduced freeze-up on chute
- 7** Full one year warranty on materials and workmanship.
- 8** Shear bolt protection for the fan and cross auger.

SCHULTE RDX-960, SDX-960 AND SDX-840

All snow blowers include a heavy duty 300 degree gear driven chute rotation mechanism that is operated by a 7.3 cubic inch hydraulic motor. (No more cables!!) High carbon steel is used in both the cutting edge and adjustable skid shoes. Fan and feeding auger are protected by shear bolts. The fan shaft is a heat treated 1-5/8" splined shaft. An available standard power shaft on the RDX-960 and SDX-960 is a Size 6 shaft (European) with a 10mm shear bolt. An available standard power shaft on the SDX-840 is a Size 5 shaft (European) with a 10mm shear bolt. Heavy duty shafts are also available on all models for heavy duty use. A standard Category 2 three point hitch or Category 2 quick hitch can be used to attach to the blowers.

Features



The heart of these Snow Blowers is the 4 paddle open center, cupped blade design fan that concentrates snow to the center & back of the fan resulting in improved performance.



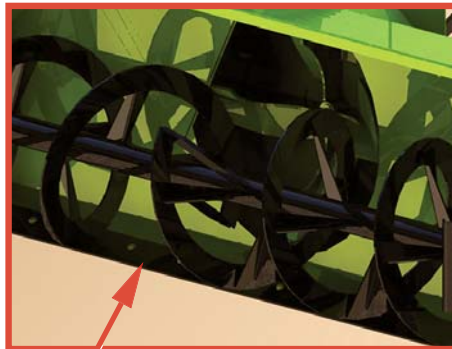
Open auger design with formed struts. The RDX-960 and SDX-960 use a 23" auger. SDX-840 uses a 18" auger. This type of design cuts into hard packed snow & feeds the fan with ease.



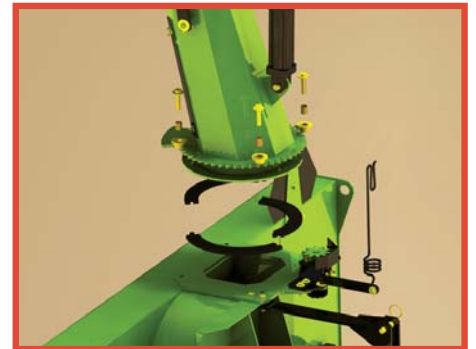
The double chute deflector reduces blow back of snow. Only available on the RDX-960 and SDX-960.



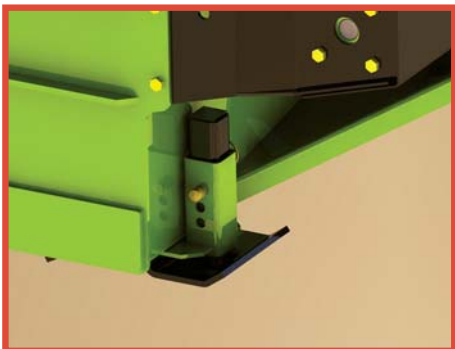
A gear driven 300 degree hydraulic chute rotator comes standard with a 7.3 cubic inch hydraulic motor.



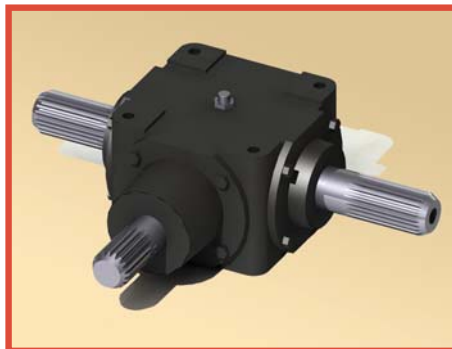
High grade steel bolt in replaceable cutting blade is standard and gives many years of trouble free cutting performance.



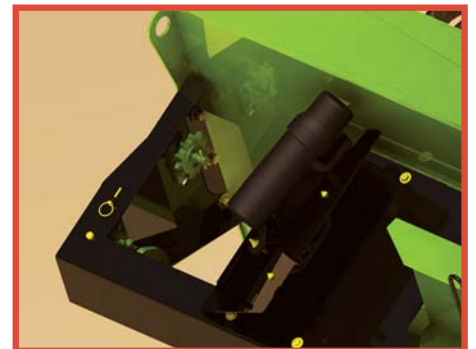
A high molecular UHMW bearing area keeps freeze ups to a minimum in the coldest weather conditions.



Adjustable replaceable skid shoes are standard. Gauge wheel with tapered roller bearings are optional for use on pavement or cement.



1/8" splined and heat treated fan shaft is standard on the RDX-960, SDX-960 and SDX-840. A 1/8" splined hub welded into the fan ensures maximum strength over competitive keyed designs.



The idler sprocket maintains constant tension on the auger drive chain and reduces possible freeze ups.

SDX / RDX Series Specifications

SPECIFICATIONS

	RDX-960	SDX-960	SDX-840
Cutting Width	96" (2.44m)	96" (2.44m)	84" (2.14m)
Tractor Horsepower	85 - 140 HP (63 - 104KW)	85 - 140 HP (63 - 104KW)	55 - 95 HP (41 - 71KW)
Cutting Height	37" (939mm)	35" (889mm)	30" (762mm)
Overall Height	100" (2.54m)	96" (2.44m)	78" (1.98m)
Auger Diameter	23" (584mm)	23" (584mm)	18" (457mm)
Fan Diameter	30" (762mm)	30" (762mm)	26" (660mm)
Fan Type	4 paddle	4 paddle	4 paddle
Fan Shaft Diameter	1 5/8" (41mm)	1 5/8" (41mm)	1 5/8" (41mm)
Auger Drive Chain	#80	#80	#60
Weight	1765lbs	1420lbs (530kg)	1000lbs (373kg)
Adjust. Double Linked Chute Deflector	Standard	Standard	N/A
Hydraulic Chute Rotation Mechanism	Standard	Standard	Standard
Replaceable Blade	Standard	Standard	Standard
Adjustable Replaceable Skid Shoes	Standard	Standard	Standard
Hitch Size	Cat II, Cat II quick hitch	Cat II, Cat II quick hitch	Cat II, Cat II quick hitch
PTO Speed	540 RPM	540 RPM	540 RPM
Capacity - Dry snow / Wet Snow	426tons/hr / 1343tons/hr	388tons/hr / 1222tons/hr	258tons/hr / 810tons/hr

RDX-960/SDX-960 OPTIONS

1. Heavy duty power shaft size 6
2. Size 8 heavy duty power shaft for tractors over 125hp
3. Heavy duty chute kit
4. Truck loading chute kit
5. Hydraulic or manual chute deflectors
6. 3pt extension kit c/w size 8 HD power shaft
7. Gauge wheel kit

SDX-840 OPTIONS

1. Hydraulic cylinder kit, with hoses for chute deflector
2. Gauge wheels
3. Heavy duty power shaft
4. Three point extension kit
5. Manual chute deflector bar



A perfect combination for Schulte's model SDX-960 and RDX-960 is the FM-300 front mount 3pt hitch frame.

SPECIFICATIONS	FM-300
Tractor horsepower, maximum	250 HP
Tractor PTO	1000 RPM for SDX110 and SDX960, 540 RPM for SDX960 only
Lift capacity	5000 lbs
Adjustability	Accommodates tractors between 151" and 211" measured from front mount plate to drawbar pin
Nominal ground clearance	13" depending on tractor installation
Nominal lift range	18"
Weight	1650 lbs

SCHULTE



Schulte Industries Ltd.,

P.O. Box 70, Englefeld, Saskatchewan, Canada S0K 1N0

Tel: (306) 287-3715 Fax: (306) 287-3355

E-Mail: info@schulte.ca

Visit our Web site at: www.schulte.ca

Schulte is a registered trademark of Alamo Group Inc.

Schulte Industries Ltd. reserves the right to change the design, specification of its products without notice. Illustrations may include optional equipment and accessories, and may not include all standard equipment.



ISO 9001

Sold By:

PRINTED IN CANADA

PREPARED by NELSON GRAPHIC DESIGN

201009